

	SUSTAINABLE BESPOKE TIMBERS - COMMERCIAL & RESIDENTIAL		⌵
	WWW.NZNATURALTIMBER.CO.NZ SALES@NZNATURALTIMBER.CO.NZ - PHONE 0800NZTIMBER	SHOWROOM 51 COMMERCE ST WHANGAREI 0110 NEW ZEALAND	FULL SERVICE

# Macrocarpa

## Cladding

-----  
**Product Code: NT-MC.02**  
 -----

A beautiful, naturally durable and renewable timber cladding grown in New Zealand. Sourced from plantation forests where a consistent grade of timber is produced, New Zealand Macrocarpa (Mexican cypress) is dimensionally the most versatile, natural, eco timber in the cladding and exterior category. Available in select long lengths and a wide range of sizes, profiles and finishes, Macrocarpa will add a beautiful and natural lustre to the exterior outlook of your project.

# Technical Specifications

- Minimal processing required
- Sustainable harvesting methods
- Band sawing, circular sawing or dressed face options
- Select long lengths available
- Natural durability equivalent to H3.1
- Readily accepts natural timber care oils
- Hard wearing and high impact resistance
- Completely chemical free option for a beautiful natural timber cladding

## PRODUCT CODE

NT-MC.02

## GRADES

Select:  
Sound tight knot

## SIZING

Shiplap:  
90 x 21mm NT49 (65mm cover)  
135 x 21mm NT51 (110mm cover)

Bevel back:  
135 x 20mm NT61 (110mm cover)  
180 x 20mm NT81 (160mm cover)

\*Available in random widths

Board:  
135 x 20mm NTB1 & 180 x 20mm NTB2

Batten:  
65 x 20mm NTBT1 & 90 x 20mm NTBT2

## COLOUR RANGE

NATURAL



AMBER



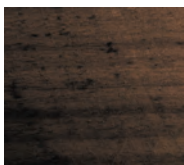
MAHOGANY



BURNT UMBER



CHARCOAL



PEWTER



## FINISH OPTIONS

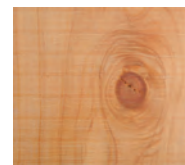
SMOOTH - NATURAL OIL COAT



CIRCULAR SAWN

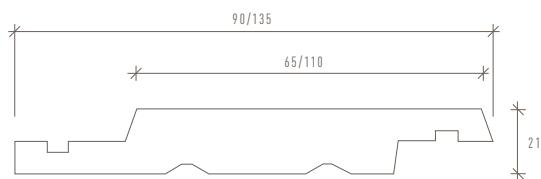


BANDSAWN

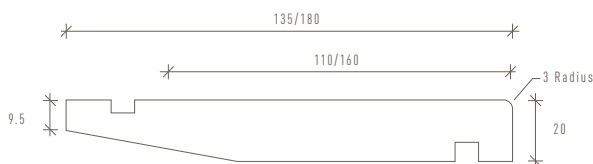


## PROFILE SPECIFICATION

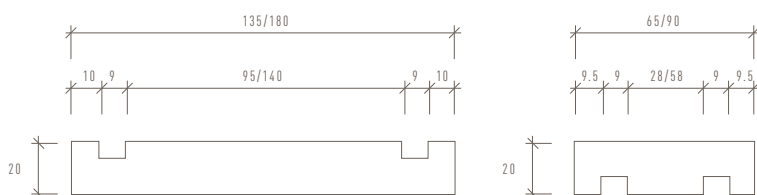
### SHIPLAP NT49/NT51



### BEVEL BACK NT61/NT81



### BOARD AND BATTEN NTBT1/NTBT2



## LIVING WOOD

LivingWood signifies compliance with the highest standard of sustainable product sourcing and processing. Where possible, our timbers are naturally treated to achieve outstanding products which use far less chemicals than previously possible.

This guarantees a healthier product, a healthier building and therefore a healthier environment, for you and your family.

All New Zealand Natural Timber Co. products have the LivingWood seal of approval.

# LivingWood

