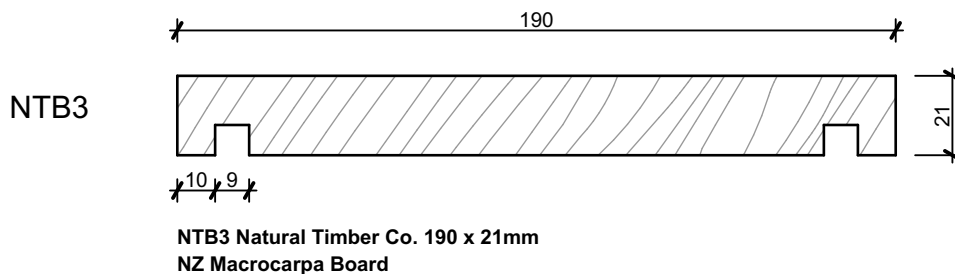
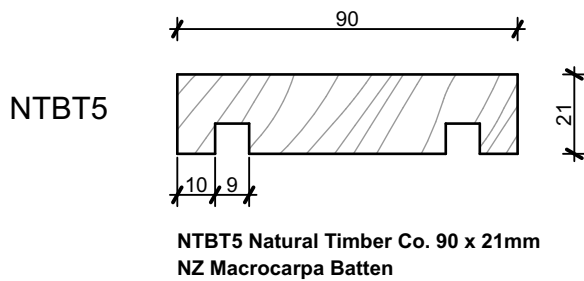
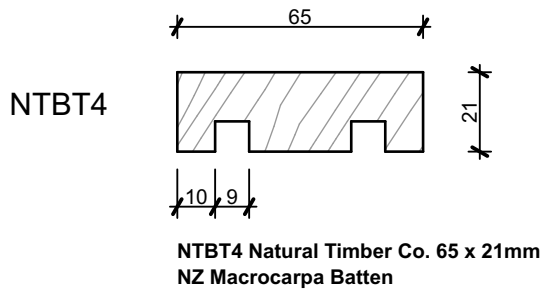
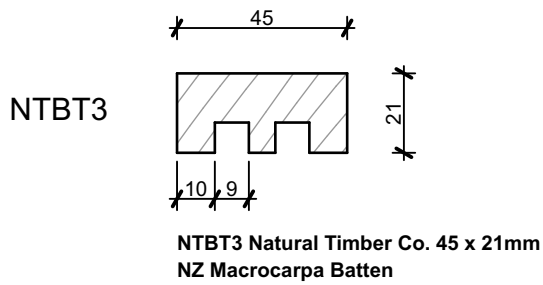


| | | | |
|----------------------------------------------------------------------------------|-------------------------------------------------------------------------------------|-------------------------------------------------------------|--------------|
|  | SUSTAINABLE BESPOKE TIMBERS - COMMERCIAL & RESIDENTIAL | | ⇒ |
| | WWW.NZNATURALTIMBER.CO.NZ SALES@NZNATURALTIMBER.CO.NZ - PHONE 0800NZTIMBER | SHOWROOM 51 COMMERCE ST WHANGAREI 0110 NEW ZEALAND | FULL SERVICE |

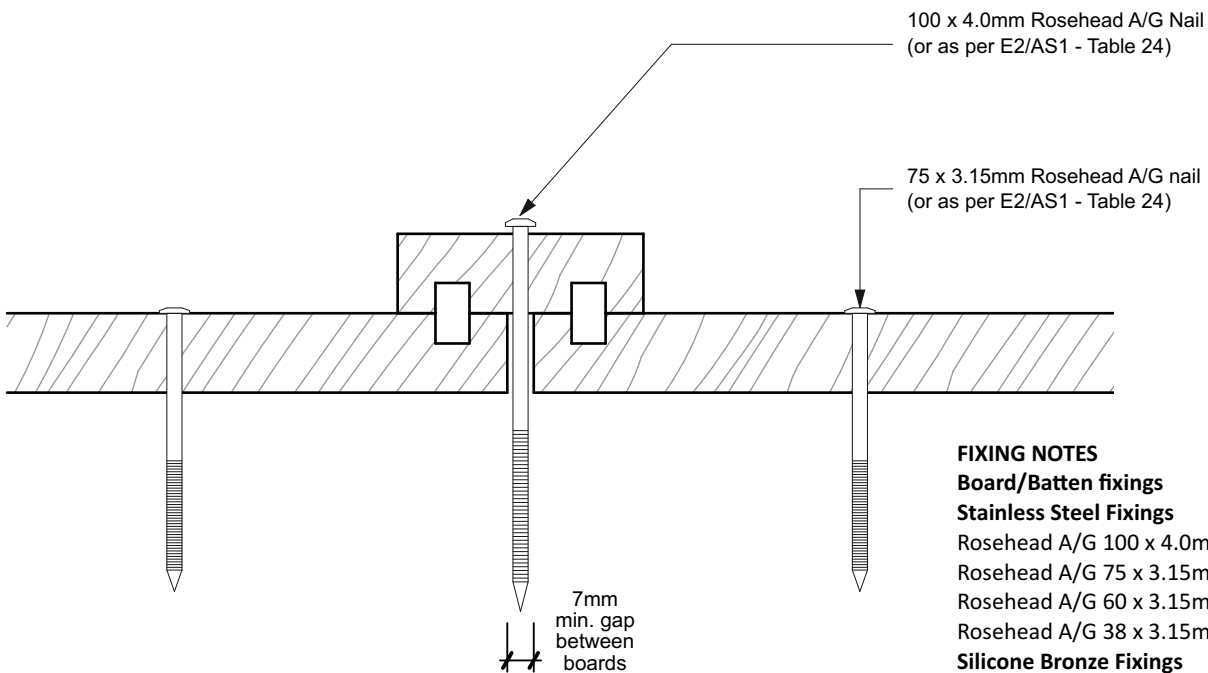
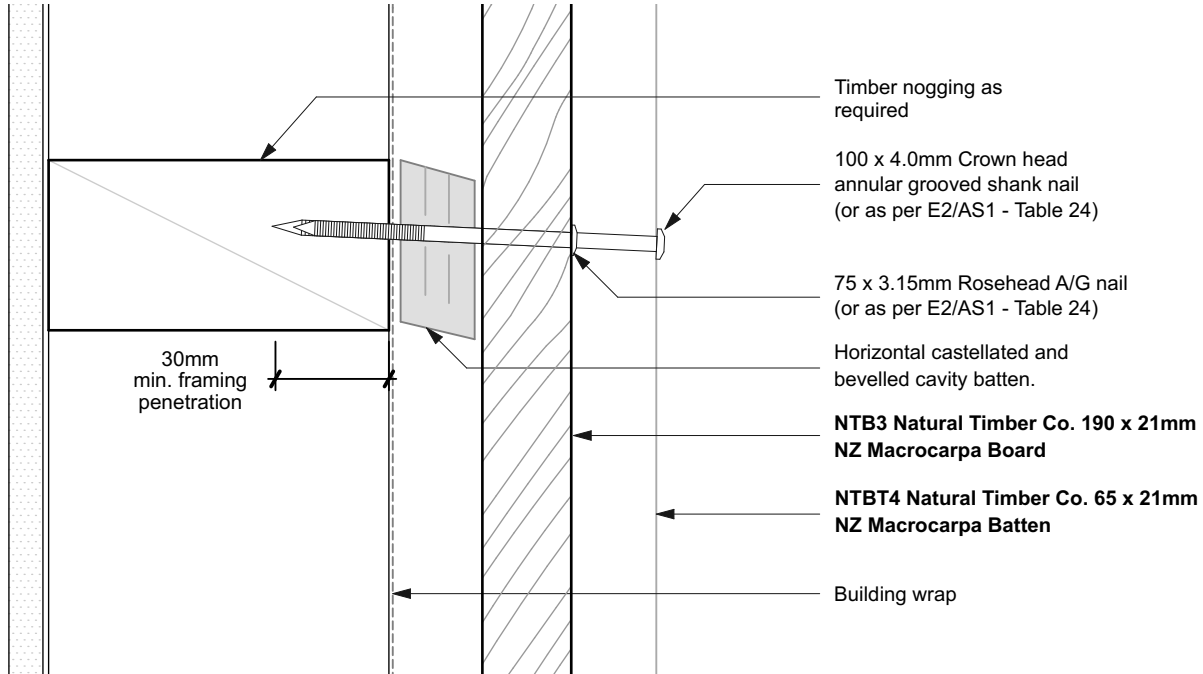


NOTES

- All nail fixings pre-drilled min. 1mm diameter smaller than the nail gauge.
- All NZ Natural Timber Co. timber products to be pre-coated and cut ends and edges and all fresh cut surfaces double coated and sealed before fixing.
- All corner flashings to be 75 x 75mm to suit all wind zones. All flashings to have hemmed edges to NZBC E2/AS1.
- Avoid contact in seaspray zones or corrosion zone D between CCA treated timber and metal flashings. Refer NZBC E2/AS1 Table 21

| | | |
|--------------------------------------------------------------------|--|--------------------------|
| NT-MC.02 Board & Batten Weatherboard System. Cavity Fix | | SCALE 1:2 @ A4 |
| DRAWING Board and Batten Profiles | | 01 |

| | | | |
|----------------------------------------------------------------------------------|-------------------------------------------------------------------------------------|-------------------------------------------------------------|----------------------------------------------------------------------------------------------------|
|  | SUSTAINABLE BESPOKE TIMBERS - COMMERCIAL & RESIDENTIAL | |  FULL SERVICE |
| | WWW.NZNATURALTIMBER.CO.NZ SALES@NZNATURALTIMBER.CO.NZ - PHONE 0800NZTIMBER | SHOWROOM 51 COMMERCE ST WHANGAREI 0110 NEW ZEALAND | |



FIXING NOTES

Board/Batten fixings

Stainless Steel Fixings

Rosehead A/G 100 x 4.0mm

Rosehead A/G 75 x 3.15mm

Rosehead A/G 60 x 3.15mm

Rosehead A/G 38 x 3.15mm

Silicone Bronze Fixings

Rosehead A/G 100 x 4.0mm

Rosehead A/G 75 x 3.25mm

Rosehead A/G 60 x 3.25mm

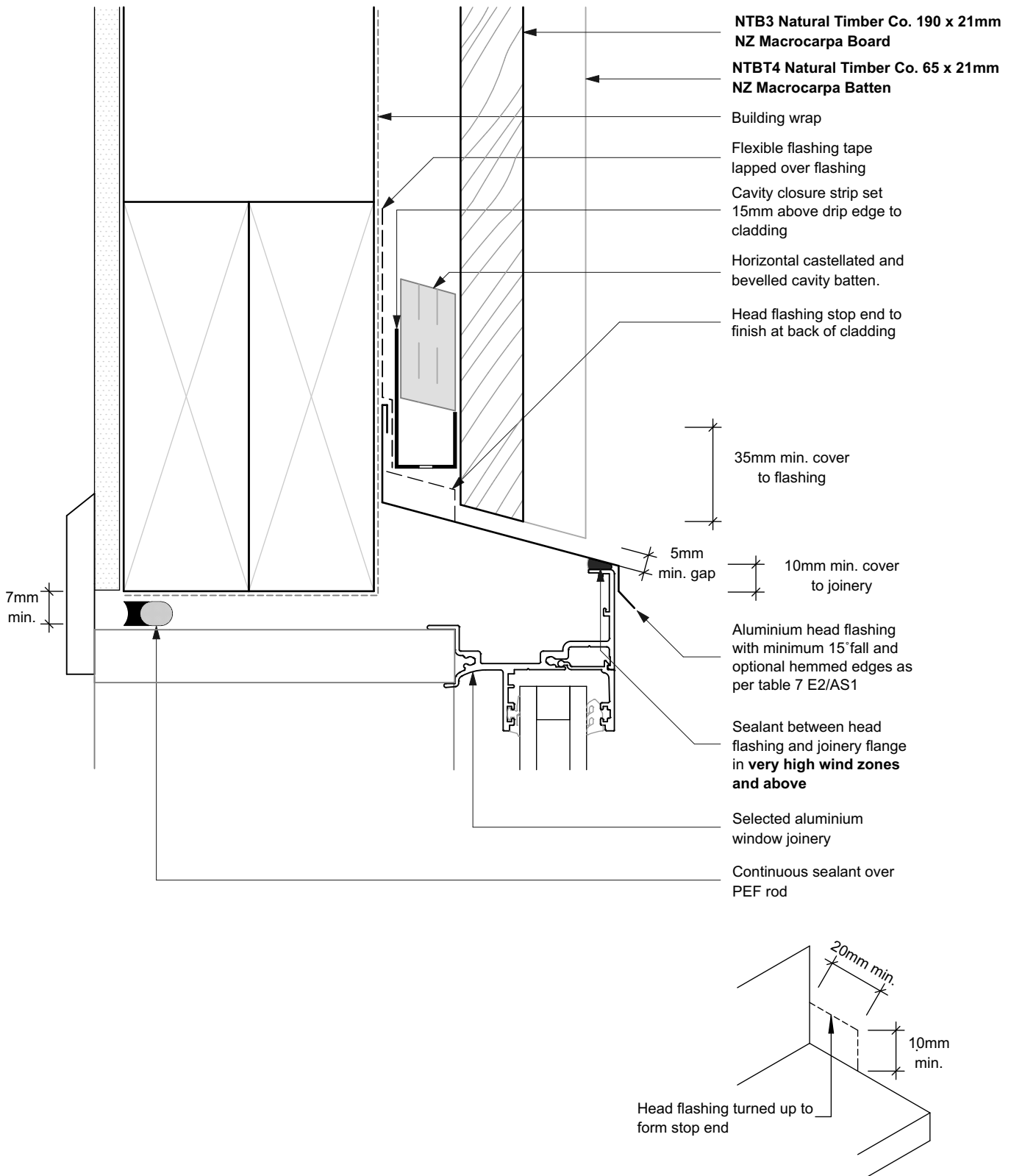
Rosehead A/G 38 x 3.25mm

NOTES

- All nail fixings pre-drilled min. 1mm diameter smaller than the nail gauge.
- All NZ Natural Timber Co. timber products to be pre-coated and cut ends and edges and all fresh cut surfaces double coated and sealed before fixing.
- All corner flashings to be 75 x 75mm to suit all wind zones. All flashings to have hemmed edges to NZBC E2/AS1.
- Avoid contact in seaspray zones or corrosion zone D between CCA treated timber and metal flashings. Refer NZBC E2/AS1 Table 21

| | | |
|--------------------------------------------------------------------|--------------------------|-------------------|
| NT-MC.02 Board & Batten Weatherboard System. Cavity Fix | | SCALE 1:2 @ A4 |
| DRAWING | Detail Cavity Fix | 02 |

| | | | |
|----------------------------------------------------------------------------------|-------------------------------------------------------------------------------------|-------------------------------------------------------------|----------------------------------------------------------------------------------------------------|
|  | SUSTAINABLE BESPOKE TIMBERS - COMMERCIAL & RESIDENTIAL | |  FULL SERVICE |
| | WWW.NZNATURALTIMBER.CO.NZ SALES@NZNATURALTIMBER.CO.NZ - PHONE 0800NZTIMBER | SHOWROOM 51 COMMERCE ST WHANGAREI 0110 NEW ZEALAND | |

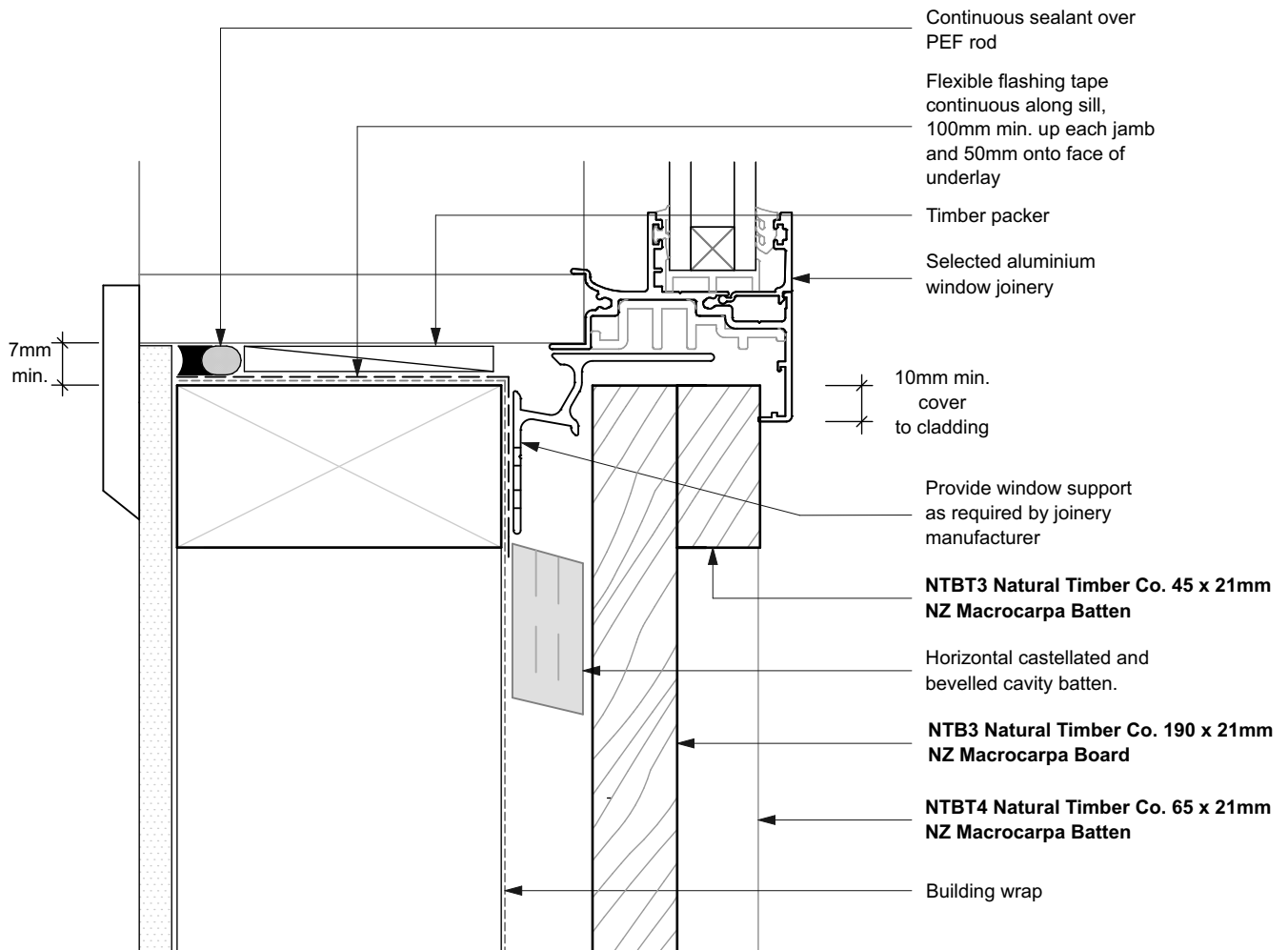


NOTES

- All nail fixings pre-drilled min. 1mm diameter smaller than the nail gauge.
- All NZ Natural Timber Co. timber products to be pre-coated and cut ends and edges and all fresh cut surfaces double coated and sealed before fixing.
- All corner flashings to be 75 x 75mm to suit all wind zones. All flashings to have hemmed edges to NZBC E2/AS1.
- Avoid contact in seaspray zones or corrosion zone D between CCA treated timber and metal flashings. Refer NZBC E2/AS1 Table 21

| | | |
|--------------------------------------------------------------------|-----------|--------------------------|
| NT-MC.02 Board & Batten Weatherboard System. Cavity Fix | | SCALE 1:2 @ A4 |
| DRAWING Window Head Detail | 03 | |

| | | | |
|----------------------------------------------------------------------------------|-------------------------------------------------------------------------------------|-------------------------------------------------------------|----------------------------------------------------------------------------------------------------|
|  | SUSTAINABLE BESPOKE TIMBERS - COMMERCIAL & RESIDENTIAL | |  FULL SERVICE |
| | WWW.NZNATURALTIMBER.CO.NZ SALES@NZNATURALTIMBER.CO.NZ - PHONE 0800NZTIMBER | SHOWROOM 51 COMMERCE ST WHANGAREI 0110 NEW ZEALAND | |

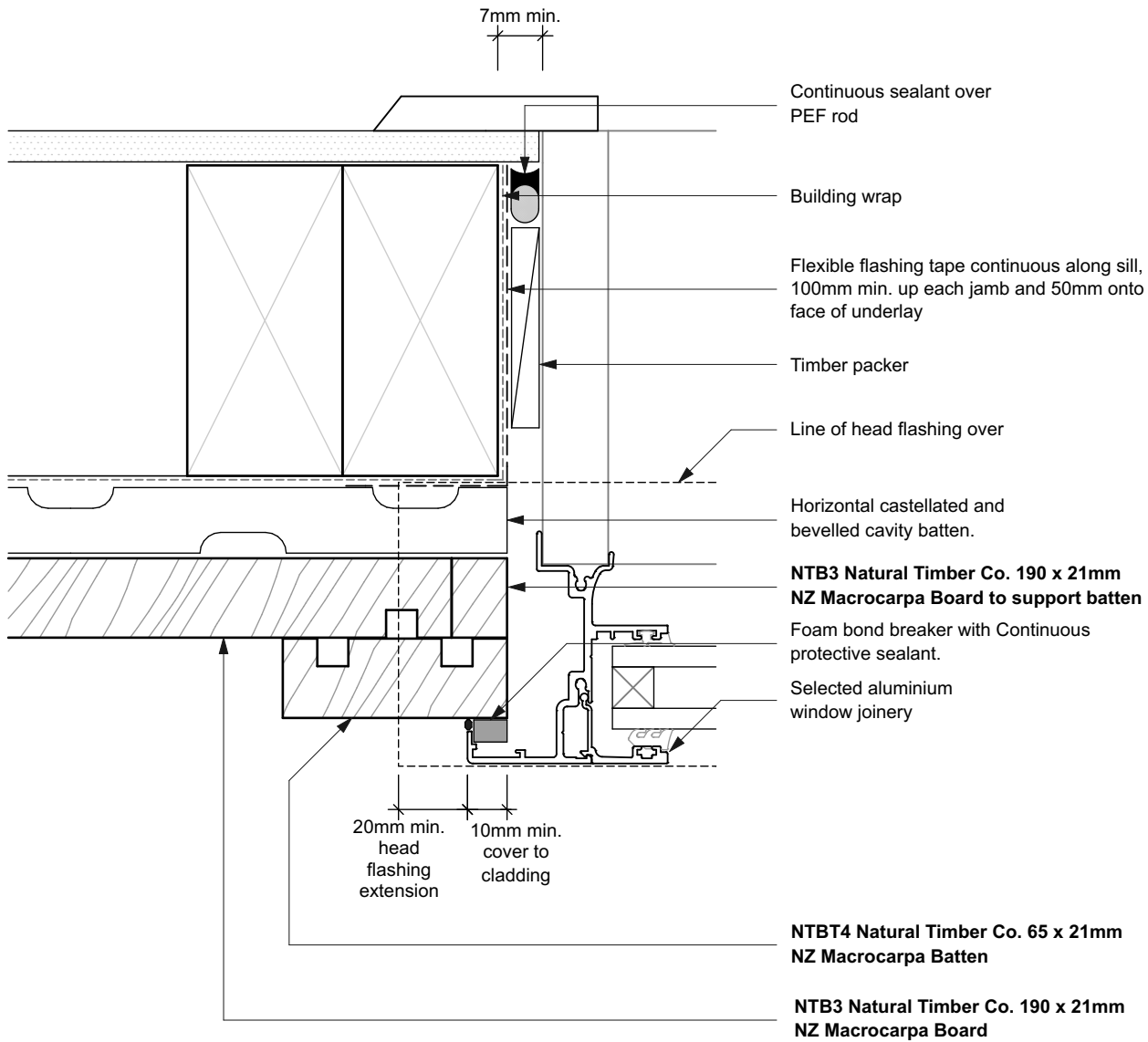


NOTES

- All nail fixings pre-drilled min. 1mm diameter smaller than the nail gauge.
- All NZ Natural Timber Co. timber products to be pre-coated and cut ends and edges and all fresh cut surfaces double coated and sealed before fixing.
- All corner flashings to be 75 x 75mm to suit all wind zones. All flashings to have hemmed edges to NZBC E2/AS1.
- Avoid contact in seaspray zones or corrosion zone D between CCA treated timber and metal flashings. Refer NZBC E2/AS1 Table 21

| | | |
|--------------------------------------------------------------------|---------------------------|-------------------|
| NT-MC.02 Board & Batten Weatherboard System. Cavity Fix | | SCALE 1:2 @ A4 |
| DRAWING | Window Sill Detail | 04 |

| | | | |
|----------------------------------------------------------------------------------|-------------------------------------------------------------------------------------|-------------------------------------------------------------|----------------------------------------------------------------------------------------------------|
|  | SUSTAINABLE BESPOKE TIMBERS - COMMERCIAL & RESIDENTIAL | |  FULL SERVICE |
| | WWW.NZNATURALTIMBER.CO.NZ SALES@NZNATURALTIMBER.CO.NZ - PHONE 0800NZTIMBER | SHOWROOM 51 COMMERCE ST WHANGAREI 0110 NEW ZEALAND | |

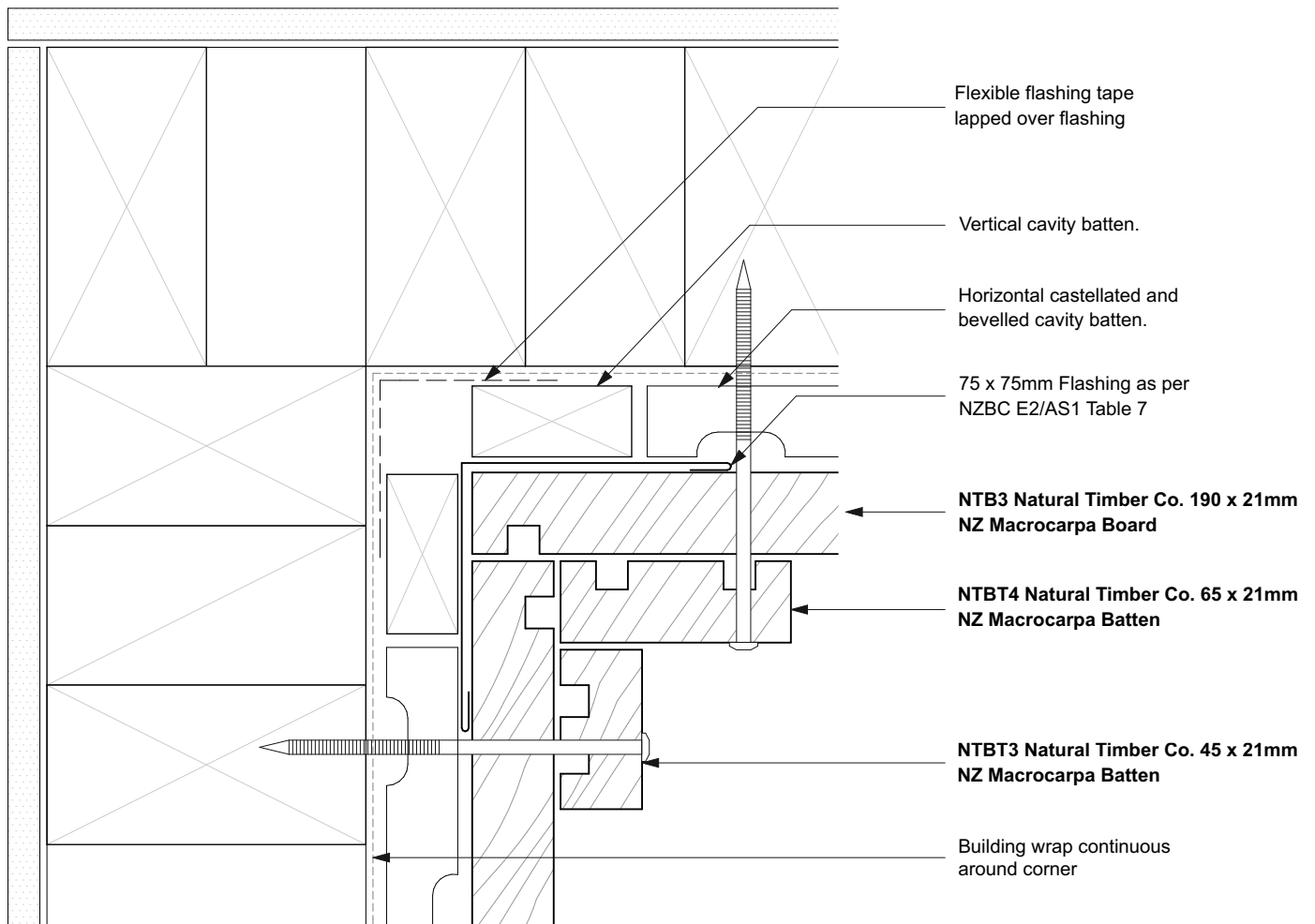


NOTES

- All nail fixings pre-drilled min. 1mm diameter smaller than the nail gauge.
- All NZ Natural Timber Co. timber products to be pre-coated and cut ends and edges and all fresh cut surfaces double coated and sealed before fixing.
- All corner flashings to be 75 x 75mm to suit all wind zones. All flashings to have hemmed edges to NZBC E2/AS1.
- Avoid contact in seaspray zones or corrosion zone D between CCA treated timber and metal flashings. Refer NZBC E2/AS1 Table 21

| | | |
|--------------------------------------------------------------------|---------------------------|-------------------|
| NT-MC.02 Board & Batten Weatherboard System. Cavity Fix | | SCALE 1:2 @ A4 |
| DRAWING | Window Jamb Detail | 05 |

| | | | |
|----------------------------------------------------------------------------------|-------------------------------------------------------------------------------------|-------------------------------------------------------------|------------------------------------------------------------------------------------|
|  | SUSTAINABLE BESPOKE TIMBERS - COMMERCIAL & RESIDENTIAL | |  |
| | WWW.NZNATURALTIMBER.CO.NZ SALES@NZNATURALTIMBER.CO.NZ - PHONE 0800NZTIMBER | SHOWROOM 51 COMMERCE ST WHANGAREI 0110 NEW ZEALAND | |

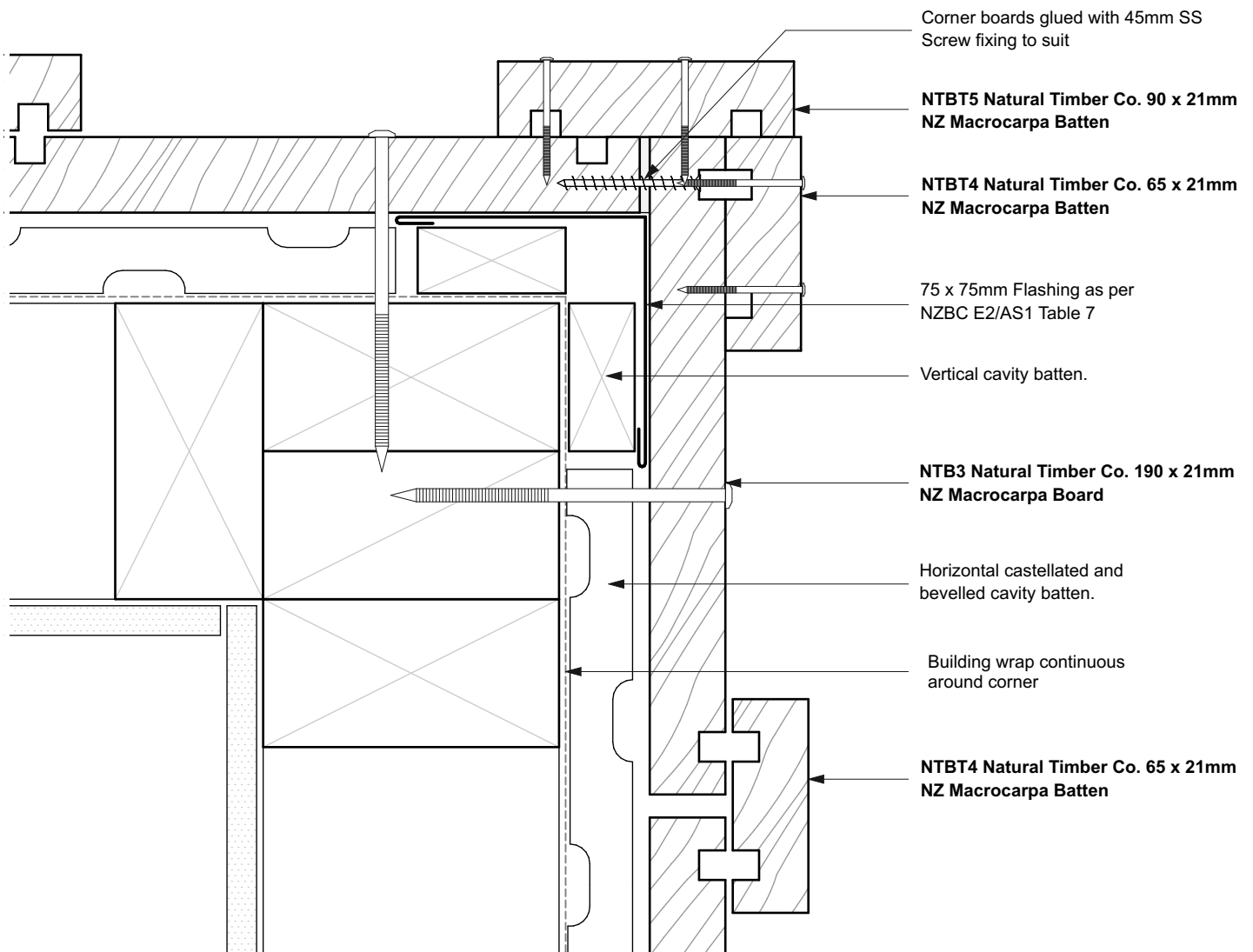


NOTES

- All nail fixings pre-drilled min. 1mm diameter smaller than the nail gauge.
- All NZ Natural Timber Co. timber products to be pre-coated and cut ends and edges and all fresh cut surfaces double coated and sealed before fixing.
- All corner flashings to be 75 x 75mm to suit all wind zones. All flashings to have hemmed edges to NZBC E2/AS1.
- Avoid contact in seaspray zones or corrosion zone D between CCA treated timber and metal flashings. Refer NZBC E2/AS1 Table 21

| | | |
|--------------------------------------------------------------------|------------------------|-------------------|
| NT-MC.02 Board & Batten Weatherboard System. Cavity Fix | | SCALE 1:2 @ A4 |
| DRAWING | Internal Corner | 06 |

| | | | |
|----------------------------------------------------------------------------------|-------------------------------------------------------------------------------------|-------------------------------------------------------------|-------------------------------------------------------------------------------------------------|
|  | SUSTAINABLE BESPOKE TIMBERS - COMMERCIAL & RESIDENTIAL | |  FULL SERVICE |
| | WWW.NZNATURALTIMBER.CO.NZ SALES@NZNATURALTIMBER.CO.NZ - PHONE 0800NZTIMBER | SHOWROOM 51 COMMERCE ST WHANGAREI 0110 NEW ZEALAND | |

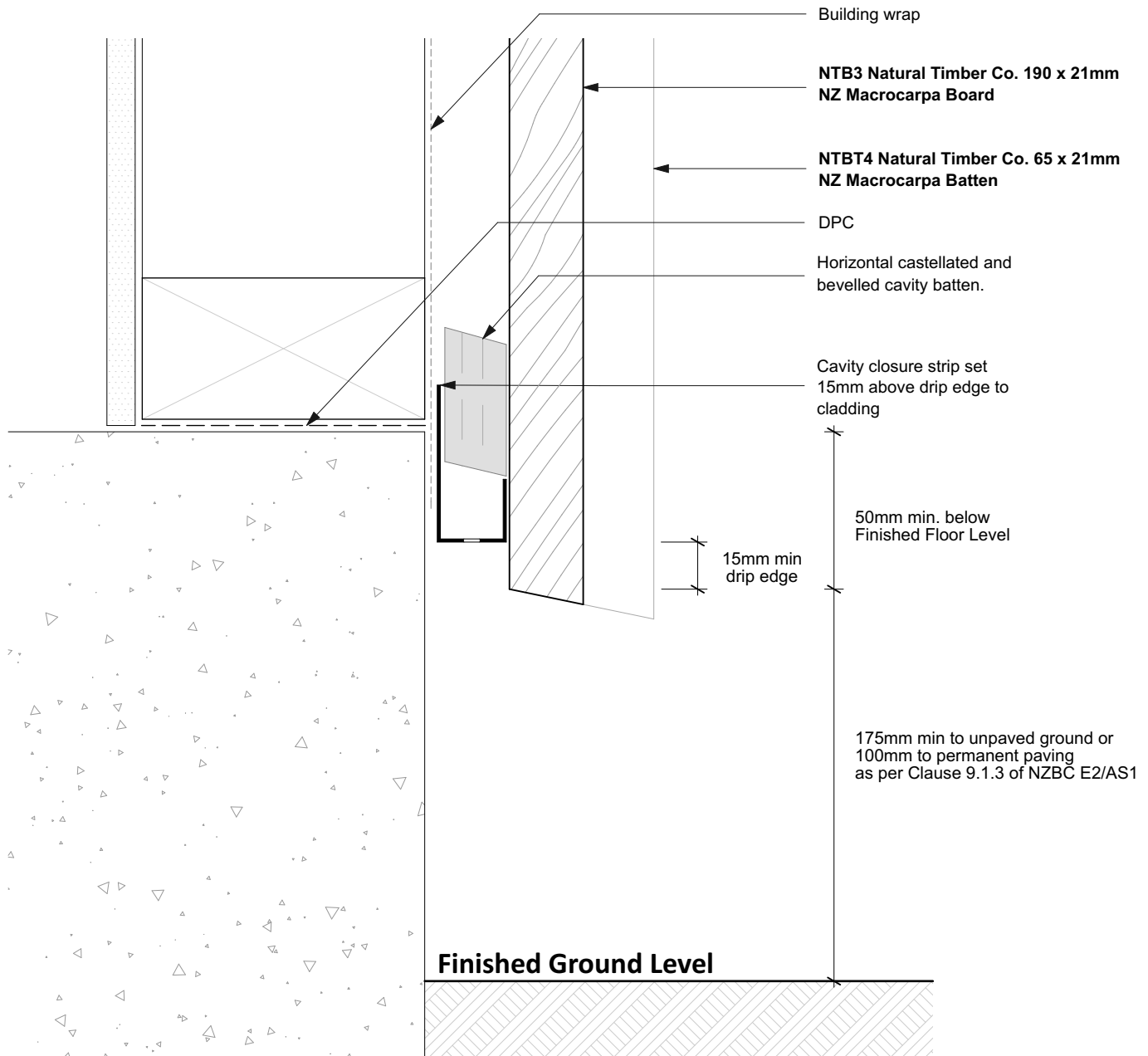


NOTES

- All nail fixings pre-drilled min. 1mm diameter smaller than the nail gauge.
- All NZ Natural Timber Co. timber products to be pre-coated and cut ends and edges and all fresh cut surfaces double coated and sealed before fixing.
- All corner flashings to be 75 x 75mm to suit all wind zones. All flashings to have hemmed edges to NZBC E2/AS1.
- Avoid contact in seaspray zones or corrosion zone D between CCA treated timber and metal flashings. Refer NZBC E2/AS1 Table 21

| | | |
|--------------------------------------------------------------------|------------------------|--------------------------|
| NT-MC.02 Board & Batten Weatherboard System. Cavity Fix | | SCALE 1:2 @ A4 |
| DRAWING | External Corner | 07 |

| | | | |
|----------------------------------------------------------------------------------|--------------------------------------------------------|----------------|----------------------------------------------------------------------------------------------------|
|  | SUSTAINABLE BESPOKE TIMBERS - COMMERCIAL & RESIDENTIAL | |  FULL SERVICE |
| | WWW.NZNATURALTIMBER.CO.NZ | SHOWROOM | |
| | SALES@NZNATURALTIMBER.CO.NZ | 51 COMMERCE ST | |
| | | WHANGAREI 0110 | |
| PHONE 0800NZTIMBER | | NEW ZEALAND | |

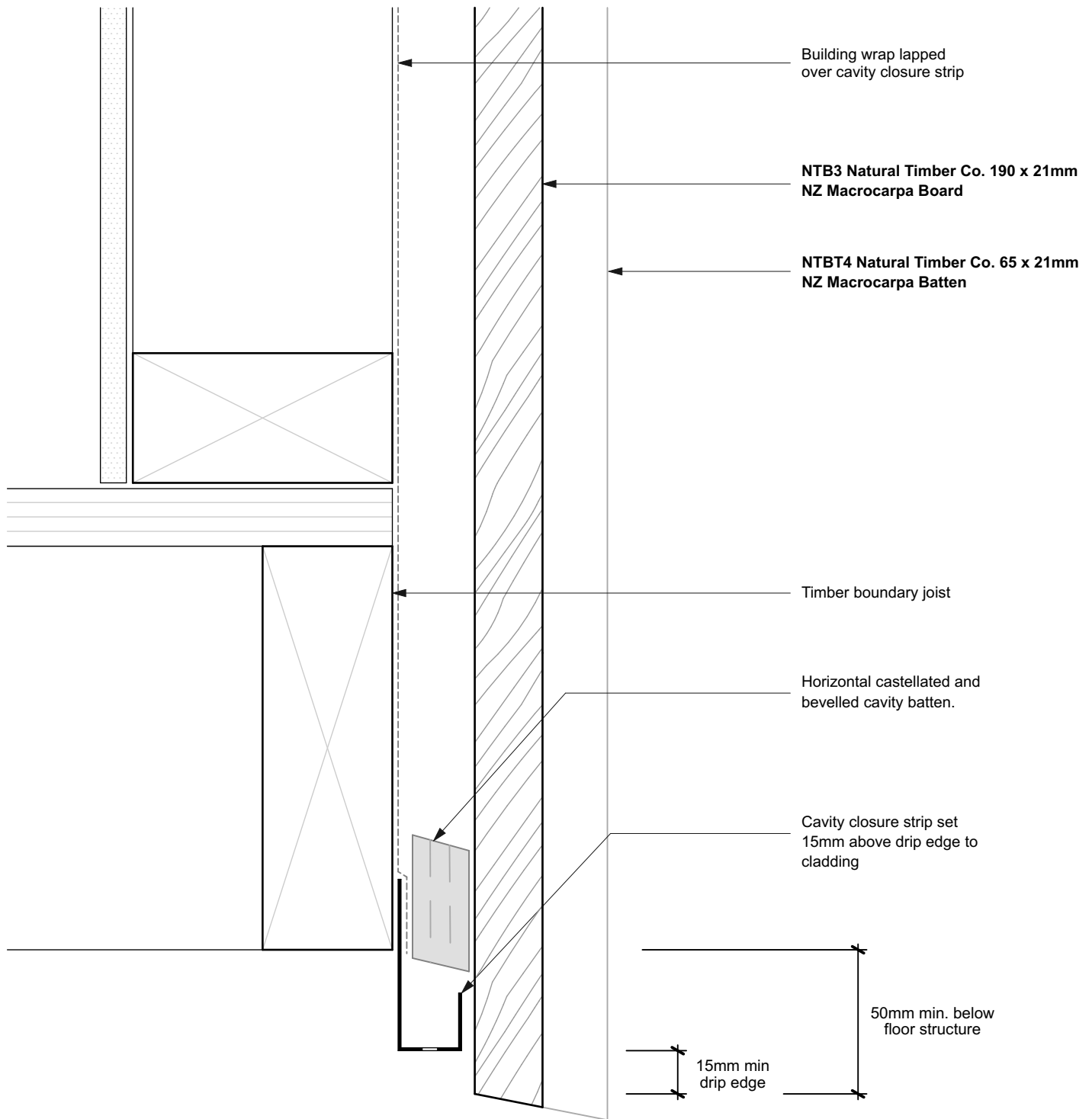


NOTES

- All nail fixings pre-drilled min. 1mm diameter smaller than the nail gauge.
- All NZ Natural Timber Co. timber products to be pre-coated and cut ends and edges and all fresh cut surfaces double coated and sealed before fixing.
- All corner flashings to be 75 x 75mm to suit all wind zones. All flashings to have hemmed edges to NZBC E2/AS1.
- Avoid contact in seaspray zones or corrosion zone D between CCA treated timber and metal flashings. Refer NZBC E2/AS1 Table 21

| | |
|--------------------------------------------------------------------|-------------------|
| NT-MC.02 Board & Batten Weatherboard System. Cavity Fix | SCALE 1:2 @ A4 |
| DRAWING Base of Wall - Concrete | 08 |

| | | | |
|----------------------------------------------------------------------------------|-------------------------------------------------------------------------------------|-------------------------------------------------------------|------------------------------------------------------------------------------------|
|  | SUSTAINABLE BESPOKE TIMBERS - COMMERCIAL & RESIDENTIAL | |  |
| | WWW.NZNATURALTIMBER.CO.NZ SALES@NZNATURALTIMBER.CO.NZ - PHONE 0800NZTIMBER | SHOWROOM 51 COMMERCE ST WHANGAREI 0110 NEW ZEALAND | |

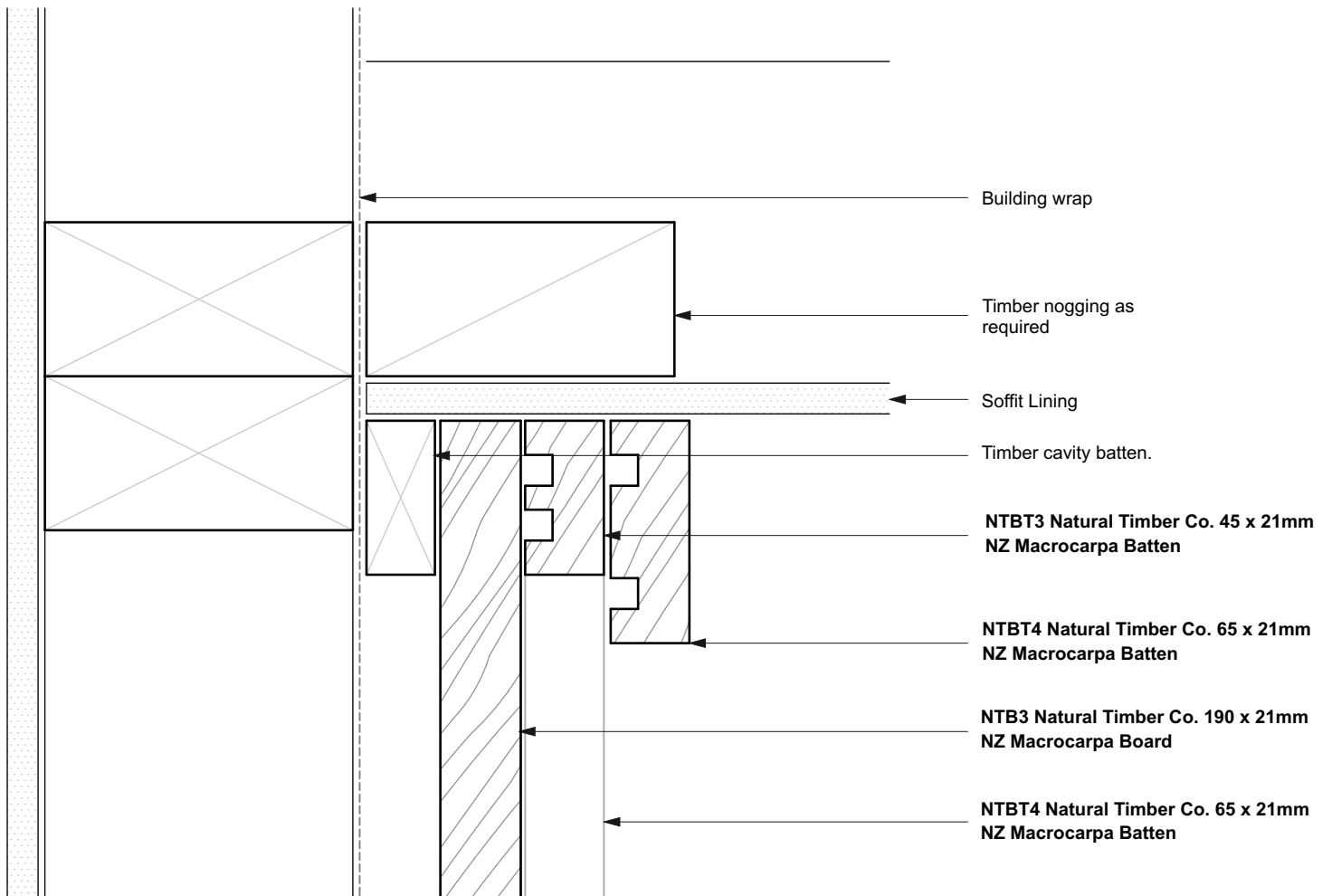


NOTES

- All nail fixings pre-drilled min. 1mm diameter smaller than the nail gauge.
- All NZ Natural Timber Co. timber products to be pre-coated and cut ends and edges and all fresh cut surfaces double coated and sealed before fixing.
- All corner flashings to be 75 x 75mm to suit all wind zones. All flashings to have hemmed edges to NZBC E2/AS1.
- Avoid contact in seaspray zones or corrosion zone D between CCA treated timber and metal flashings. Refer NZBC E2/AS1 Table 21

| | | |
|--------------------------------------------------------------------|-----------|--------------------------|
| NT-MC.02 Board & Batten Weatherboard System. Cavity Fix | | SCALE 1:2 @ A4 |
| DRAWING Base of Wall - Timber | 09 | |

| | | | |
|----------------------------------------------------------------------------------|-------------------------------------------------------------------------------------|-------------------------------------------------------------|------------------------------------------------------------------------------------|
|  | SUSTAINABLE BESPOKE TIMBERS - COMMERCIAL & RESIDENTIAL | |  |
| | WWW.NZNATURALTIMBER.CO.NZ SALES@NZNATURALTIMBER.CO.NZ - PHONE 0800NZTIMBER | SHOWROOM 51 COMMERCE ST WHANGAREI 0110 NEW ZEALAND | |

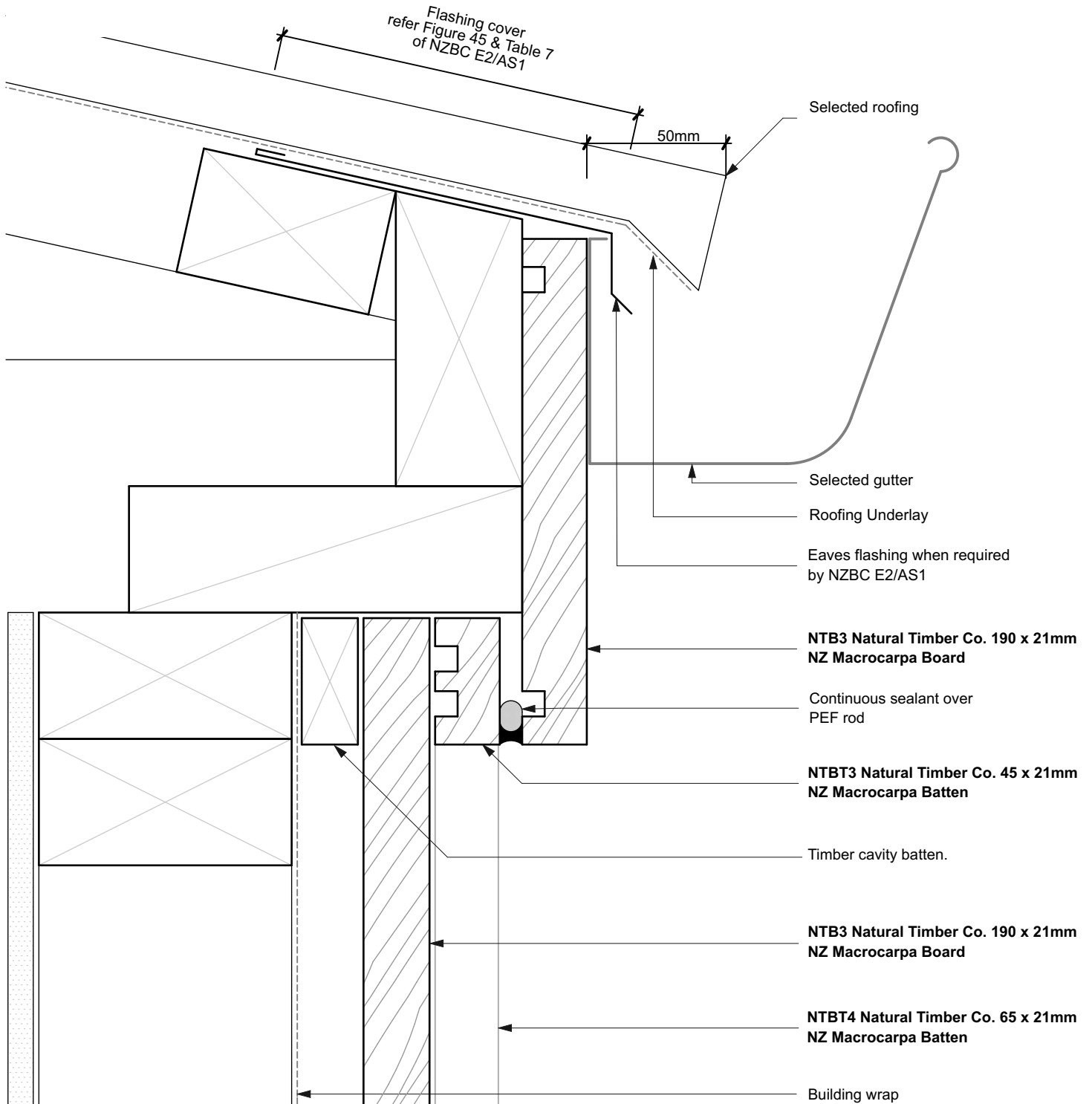


NOTES

- All nail fixings pre-drilled min. 1mm diameter smaller than the nail gauge.
- All NZ Natural Timber Co. timber products to be pre-coated and cut ends and edges and all fresh cut surfaces double coated and sealed before fixing.
- All corner flashings to be 75 x 75mm to suit all wind zones. All flashings to have hemmed edges to NZBC E2/AS1.
- Avoid contact in seaspray zones or corrosion zone D between CCA treated timber and metal flashings. Refer NZBC E2/AS1 Table 21

| | | |
|--------------------------------------------------------------------|--|--------------------------|
| NT-MC.02 Board & Batten Weatherboard System. Cavity Fix | | SCALE 1:2 @ A4 |
| DRAWING Soffit Detail Overhang | | 10 |

| | | | |
|----------------------------------------------------------------------------------|-------------------------------------------------------------------------------------|-------------------------------------------------------------|------------------------------------------------------------------------------------|
|  | SUSTAINABLE BESPOKE TIMBERS - COMMERCIAL & RESIDENTIAL | |  |
| | WWW.NZNATURALTIMBER.CO.NZ SALES@NZNATURALTIMBER.CO.NZ - PHONE 0800NZTIMBER | SHOWROOM 51 COMMERCE ST WHANGAREI 0110 NEW ZEALAND | |

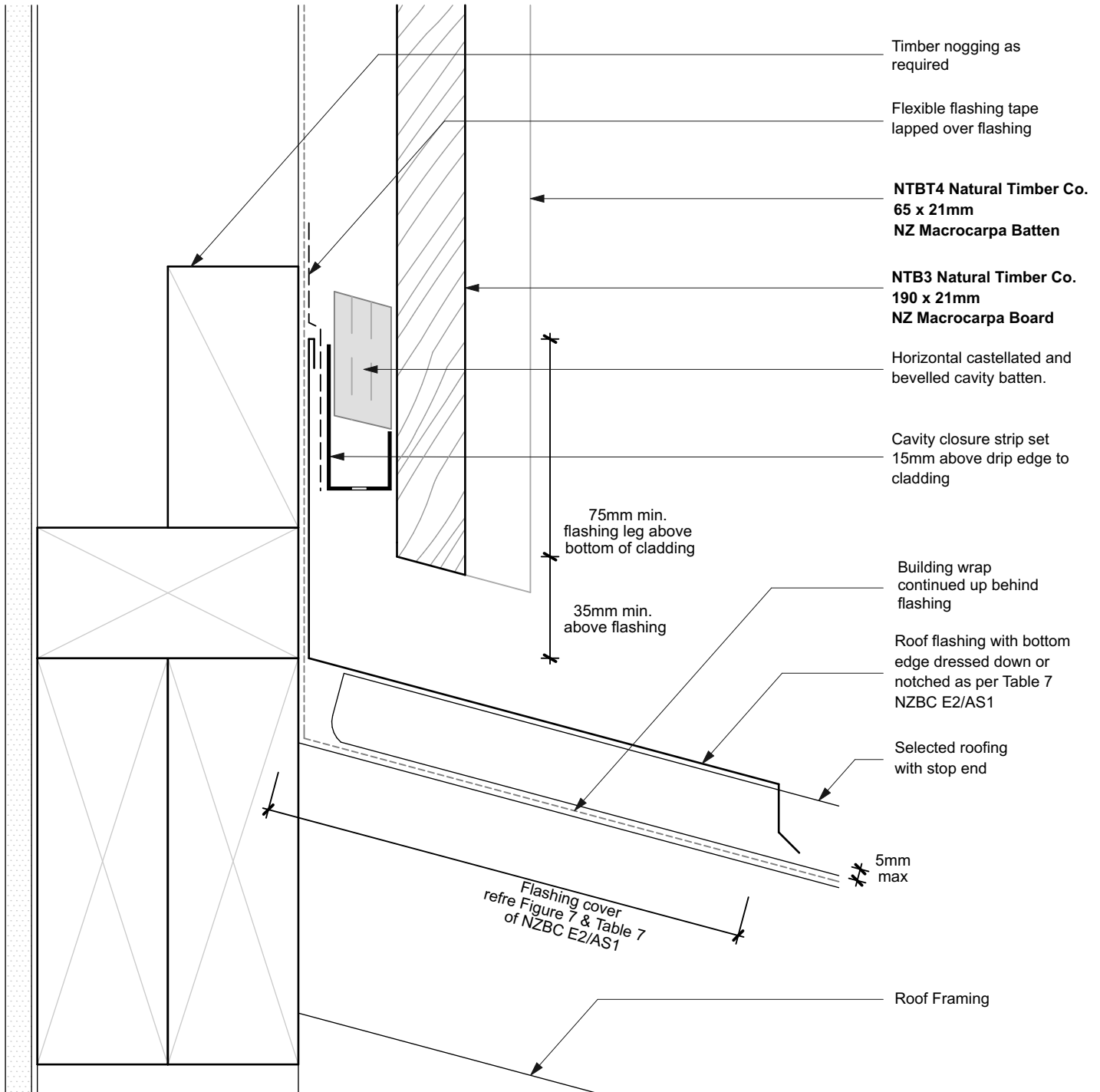


NOTES

- All nail fixings pre-drilled min. 1mm diameter smaller than the nail gauge.
- All NZ Natural Timber Co. timber products to be pre-coated and cut ends and edges and all fresh cut surfaces double coated and sealed before fixing.
- All corner flashings to be 75 x 75mm to suit all wind zones. All flashings to have hemmed edges to NZBC E2/AS1.
- Avoid contact in seaspray zones or corrosion zone D between CCA treated timber and metal flashings. Refer NZBC E2/AS1 Table 21

| | | |
|--------------------------------------------------------------------|---------------------|--------------------------|
| NT-MC.02 Board & Batten Weatherboard System. Cavity Fix | | SCALE 1:2 @ A4 |
| DRAWING | Eaves Detail | 11 |

| | | | |
|----------------------------------------------------------------------------------|-------------------------------------------------------------------------------------|-------------------------------------------------------------|------------------------------------------------------------------------------------|
|  | SUSTAINABLE BESPOKE TIMBERS - COMMERCIAL & RESIDENTIAL | |  |
| | WWW.NZNATURALTIMBER.CO.NZ SALES@NZNATURALTIMBER.CO.NZ - PHONE 0800NZTIMBER | SHOWROOM 51 COMMERCE ST WHANGAREI 0110 NEW ZEALAND | |

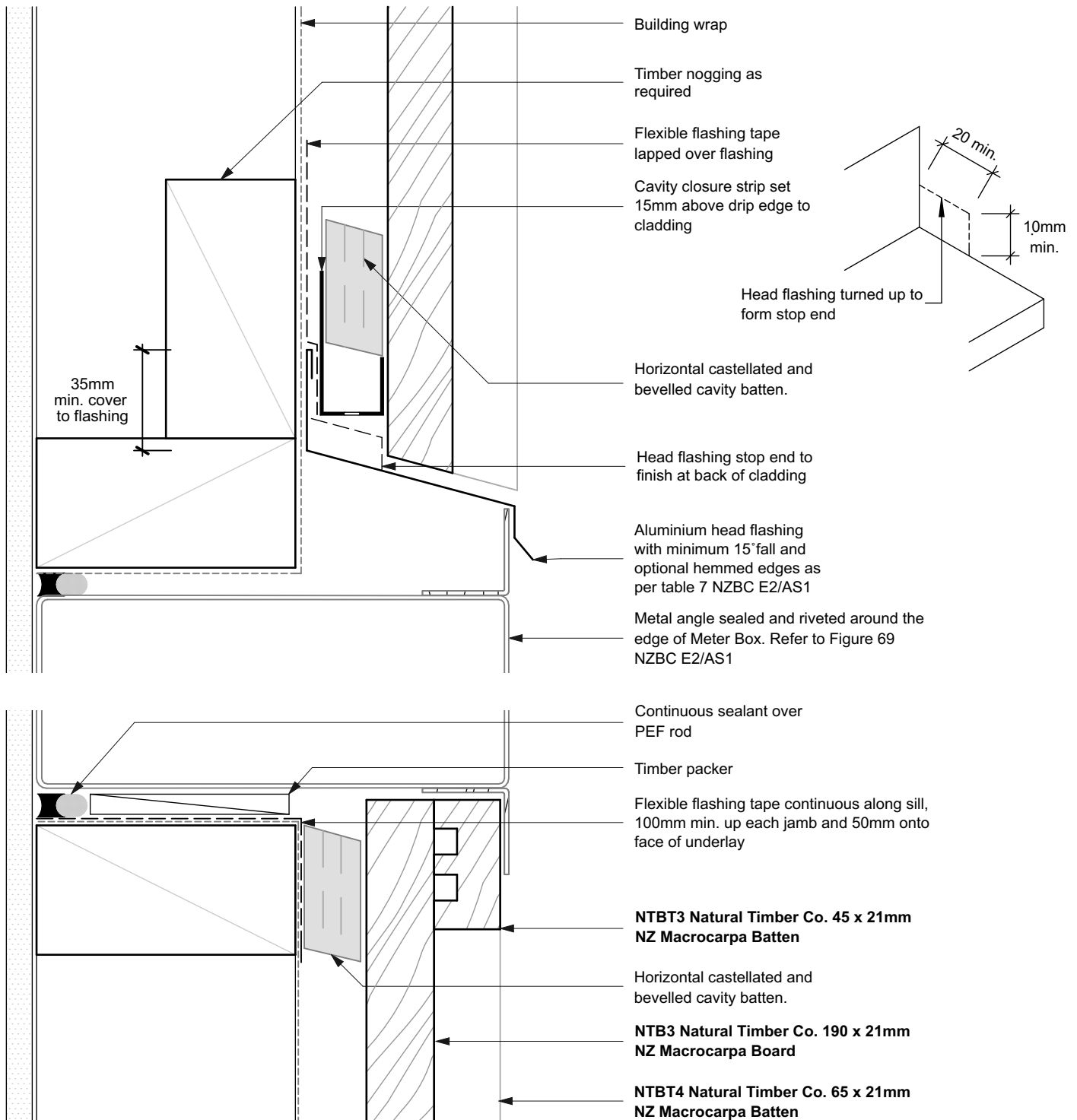


NOTES

- All nail fixings pre-drilled min. 1mm diameter smaller than the nail gauge.
- All NZ Natural Timber Co. timber products to be pre-coated and cut ends and edges and all fresh cut surfaces double coated and sealed before fixing.
- All corner flashings to be 75 x 75mm to suit all wind zones. All flashings to have hemmed edges to NZBC E2/AS1.
- Avoid contact in seaspray zones or corrosion zone D between CCA treated timber and metal flashings. Refer NZBC E2/AS1 Table 21

| | | |
|--------------------------------------------------------------------|--|-------------------|
| NT-MC.02 Board & Batten Weatherboard System. Cavity Fix | | SCALE 1:2 @ A4 |
| DRAWING Roof/Wall Junction Detail | | 12 |

| | | | |
|----------------------------------------------------------------------------------|-------------------------------------------------------------------------------------|-------------------------------------------------------------|------------------------------------------------------------------------------------|
|  | SUSTAINABLE BESPOKE TIMBERS - COMMERCIAL & RESIDENTIAL | |  |
| | WWW.NZNATURALTIMBER.CO.NZ SALES@NZNATURALTIMBER.CO.NZ - PHONE 0800NZTIMBER | SHOWROOM 51 COMMERCE ST WHANGAREI 0110 NEW ZEALAND | |



NOTES

- All nail fixings pre-drilled min. 1mm diameter smaller than the nail gauge.
- All NZ Natural Timber Co. timber products to be pre-coated and cut ends and edges and all fresh cut surfaces double coated and sealed before fixing.
- All corner flashings to be 75 x 75mm to suit all wind zones. All flashings to have hemmed edges to NZBC E2/AS1.
- Avoid contact in seaspray zones or corrosion zone D between CCA treated timber and metal flashings. Refer NZBC E2/AS1 Table 21

| | | |
|--------------------------------------------------------------------|-------------------------|--------------------------|
| NT-MC.02 Board & Batten Weatherboard System. Cavity Fix | | SCALE 1:2 @ A4 |
| DRAWING | Meter Box Detail | 13 |